



THN

- / ASBESTOS REMOVAL AND REMEDIATION
- / IN-HOUSE NATA ACCREDITED ASBESTOS, SOIL AND MOULD LABORATORY
- / TECHNICAL CONSULTANCY CAPABILITIES SPECIALISING IN ENVIRONMENTAL, GEO-TECHNICAL, ECOLOGY AND OCCUPATIONAL HEALTH & HYGIENE
- / SOIL CONTAMINATION AND REMEDIATION
- / ALL BUILDING REMEDIATION WORKS
- / DEMOLITION WORKS
- / GENERAL CIVIL AND CONSTRUCTION
- / FULL ISO ACCREDITATION IN ENVIRONMENT, SAFETY AND QUALITY

2025 CAPABILITY STATEMENT

THN/WHERE EXPERTISE MEETS EXCELLENCE



THN GROUP (THN) IS AN INDEPENDENT PRIVATE COMPANY WITH AN UNMATCHED ABILITY TO COMBINE SPECIALISED EXPERTISE IN ASBESTOS REMOVAL AND REMEDIATION, LABORATORY TESTING (ASBESTOS, SOIL AND MOULD), TECHNICAL CONSULTANCY CAPABILITIES IN ENVIRONMENTAL, GEO-TECHNICAL, ECOLOGY AND OCCUPATIONAL HEALTH AND HYGIENE, SOIL CONTAMINATION AND REMEDIATION, ALL BUILDING REMEDIATION WORKS, DEMOLITION WORKS, GENERAL CIVIL, BUILDING AND CONSTRUCTION.



DIRECTOR'S MESSAGE

As a business that has successfully operated and steadily grown since 2012, THN combines targeted technical experience and specialised expertise with disciplined project management and a holistic compliance system to create a one stop shop and in house solution for all your business needs. Our commercial acumen and commitment to deliver projects on time and on budget, allows our clients to make the right decisions and achieve their objectives in accordance with appropriate legislation and guidelines.

THN holds valid and current licenses for the following work activities in these States:

NSW Class A Asbestos Removal License
NSW Demolition License
NSW Building License
QLD Class A Asbestos Removal License
QLD Demolition License
QLD Building License
VIC Class A Asbestos Removal License
VIC Demolition License

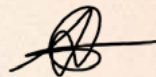
You can find copies of all our licenses in the back of this capability statement.

THN is also accredited with ISO certification in safety, quality and the environment. We use iComply, an independent compliance system (also used by the Australian Government) that ensures we stay up to date and compliant with all of our accreditations and processes.

THN fully understands the construction and remediation aspects of a project but equally as important, the commercial realities and delivery aspects and the potential impacts of key delivery decisions. As a result of our 15 years of technical experience, in-house and one stop shop solutions as well as commitment to compliance, our clients experience the benefits of cost and time savings whilst receiving the highest standard levels for our specialised works. We look forward to working with you.

GEORGE ARONIS

Director - THN Group Pty Ltd



ASBESTOS REMOVAL AND REMEDIATION FRIABLE AND BONDED

Asbestos remediation refers to the process of safely removing or managing asbestos-containing materials (ACMs) from buildings or structures to prevent the release of asbestos fibres into the air.

Asbestos, a naturally occurring mineral, was widely used in construction materials for its fire resistance and durability, but it can be hazardous to health when its fibres are inhaled, potentially leading to lung diseases such as asbestosis, lung cancer and mesothelioma. Given the health risks, asbestos remediation must be handled by licensed professionals in compliance with local and national regulations. Asbestos remediation is legally compulsory and essential due to the significant health risks posed by asbestos exposure.

THN has successfully carried out the following major asbestos remediation works:

- / Friable/bonded asbestos remediation to flood affected properties following the Northern NSW floods for multiple Insurance companies (IAG/ Suncorp/GIO/NRMA)
- / Friable asbestos remediation of fire damaged dwellings across Sydney (IAG/Suncorp/GIO/NRMA)
- / Friable asbestos soil remediation across multiple Ipswich subdivisions (Queensland Property Group)
- / Friable dust remediation in lift shafts for TK Elevators across multiple sites NSW/QLD (formerly known as ThyssenKrupp Elevators)
- / Class A removal of 1200+ meters of friable pipe lagging (St Vincents Lewisham NSW)
- / 1500 sqm friable asbestos soil sub floor remediation (confined space works at St Vincents Lewisham NSW)

IN-HOUSE NATA ACCREDITED LABORATORY

Titanium Laboratory Testing (TLT) experienced teams deliver environmental and occupational hygiene testing solutions that not only meet the industry standard but exceeds them.

TLT's experienced and technical staff can assess and provide recommendations and advice on all matters regarding asbestos, contaminated soils, and mould. We offer an upfront and personal experience simplifying the process and allowing you to focus on the next stage of your project.

We also provide a "boutique" range of technical services in that we are large enough to deliver clients specialised cost and time effective solutions but small enough to offer a personal and bespoke service experience. With full National Association of Testing Authority (NATA) accreditation, our laboratory delivers solutions that will exceed your expectations.

A table with all of our asbestos related laboratory services can be found below.

Our Range of Asbestos Related Services Include:	
Asbestos and Hazardous Materials Audit (Division 5 and Division 6)	Visual Clearance Inspection
Asbestos Testing Service	Hygienist Services - Onsite supervision/ reporting via our COH
Asbestos Sampling	NATA Accredited Asbestos Fibre Counting and Identification Lab
Asbestos Management Plans	Asbestos Fibre Count
Para-occupational Air Monitoring	Synthetic Mineral Fibre (SMF) Count
Background Monitoring	Asbestos Identification in Bulk and Non-Homogenous Samples (soil, dust, ore)
Control Monitoring	NEPM Quantitative Asbestos in Soils (Non-NATA)
Clearance Monitoring	

SOIL CONTAMINATION AND REMEDIATION

Soil may become contaminated from a wide variety of sources which may present a risk to human health and/or the environment.

THN provides accurate and detailed soil testing and analysis for a wide variety of land development, government, commercial and industrial clients.

Apart from soil and soil contamination testing, additional consultancy services that THN can provide include:

Our Range of Soil Contamination Related Services Include:	
Environmental Site Assessment (ESA)/Detailed Site Investigation (DSI)	Removal and Validation of Underground Infrastructure (i.e. Underground Storage Tanks, Triple Interceptor Traps, Petroleum Related Infrastructure)
Soil Contamination Assessment for Statutory Environmental Audit	Soil Gas Assessment (including Landfill Gas)
Soil Remediation and Clean Up (i.e. Remediation Action Plans)	Soil Management Plans
Due Diligence Soil Assessment	Environmental Management Plans
Asbestos in Soil (Assessment & Remediation)	Cultural Heritage Management Plan Exemption Assessment

THN has extensive experience assessing and characterising the contamination status of soils with respect to a particular land use. These types of assessments are undertaken with respect to the following:

Site Assessment and Characterisation	
Environmental Site Assessment (ESA)/Detailed Site Investigation (DSI)	Soil Remediation and Clean Up (i.e. Remediation Action Plans)
Soil Contamination Assessment for Statutory Environmental Audit	Due Diligence Soil Assessment

These types of assessments are undertaken in line with the following standards and guidelines:

- / National Environmental Protection (Assessment of Site Contamination) Measure 2013
- / Australian Standard AS4482.1-2005
- / Australian Standard AS4482.2-1999
- / Relevant State Environment Protection Policies



BUILDING REMEDIATION

Building remediation refers to the process of identifying, managing and rectifying hazardous or unhealthy conditions within a structure to restore it to a safe, usable state.

It typically involves the assessment, removal and replacement of contaminated materials or structural elements to prevent harm to occupants and the environment. The need for building remediation can arise from various issues including the presence of hazardous materials (asbestos, lead, mould), water damage, structural instability (concrete cancer) or contamination from chemical spills. Proper remediation always requires an experienced and multidisciplinary approach.

THN has successfully carried out the following major building remediation works:

- / Waterproofing rectification works Chevron Renaissance QLD (Precision Group)
- / Concrete cancer repairs works Chevron Renaissance QLD (Precision Group)
- / Balustrade/waterproofing replacements/concrete repairs to façade (12-16 Bligh St Randwick NSW, 3 Buildings, 9 storeys for SBM)
- / Façade brickwork repairs/cavity flashings/rooftop cladding/waterproof renewal/window replacement (2-12 Crows Nest Rd, Waverton NSW, 17 storeys for SBM)
- / Mould Remediation of wall linings and timber framed stud walls/structural drying of timber framed stud walls/in storage area post repairs of water ingress (Pet Barn Campsie NSW, during fitout stage)
- / Mould remediation timber frame wall linings/ structural drying timber frames/decontamination of entire footprint post floods and replacement of flood affected wall linings throughout Homeco centre Lismore (flood affected 12000sqm foot print)

DEMOLITION WORKS

Demolition works refer to the process of tearing down or dismantling buildings, structures or other man-made installations.

This may involve a full demolition, where the entire structure is removed or partial demolition, where only certain sections or parts of the building or structure are dismantled. Demolition works can be necessary for various reasons such as making way for new construction, removing unsafe or outdated structures or clearing land for redevelopment. The demolition method selected must be carefully tailored to the unique characteristics of the building, site and project goals, with an emphasis on safety, efficiency and minimising any environmental impacts.

THN has successfully carried out the following major demolition works:

- / Emergency demolition (with asbestos remediation, inclusive of inground silo) of Northmead Pump Station (Sydney Water)
- / Major demolition (partial building/multiple slab penetrations) Mounties Sports Club (Meridian Construction Services)
- / Demolition of 2 x 4 storey buildings (St Ursula's College Kingsgrove)
- / Demolition of 4 storey apartment block Mermaid Waters (5 Point Construction)
- / Emergency demolition works due to storm/high wind Coffs Harbour (Kingston Building Australia)



CERTIFIED OCCUPATIONAL HYGIENE (COH) SERVICES

THN Group has recently expanded its core service offering to include an in-house certified occupational hygienist to assess and minimise exposure to occupational health hazards.

These hazards include chemical, physical, biological, ergonomic and psychosocial agents. Our COH can provide excellent information and recommendations, assessments, training and toolbox sessions. Our COH has extensive experience in civil projects, mining, oil and gas, chemical manufacturing, rail possessions, building, utilities, education, childcare, aged care, human health, high risk industries, confined space entry risk management and working around vulnerable people. Our core COH services can be seen below:

Occupational Health and Hygiene Risk Management
Developing Occupational Health Hygiene and Wellness Plans (OHHWMP) informed by our: L1RA – desktop qualitative risk assessment L2RA – walkthrough assessments L3RA – quantitative RA based on monitoring data
Assurance auditing on controls including Personal Protective Equipment (PPE)
Development of occupational hygiene monitoring programs
COVID Safe Plans

Occupational Hygiene
Exposure assessments (qualitative and quantitative) of airborne contaminants such as dust and welding fumes, asbestos, lead, respirable crystalline silica (RCS) occupational noise, hand-arm vibrations, whole-body vibrations, hazardous substance and thermal stress
Outdoor and indoor air quality and work equipment assessments
Fit tests for respiratory protection equipment
Hazardous substances and dangerous goods risk management

Hazardous Materials and Building Audits (Full Compliance Report)
Assessments identifying potentially hazardous building materials across an array of buildings and spaces
Asbestos, lead in paint, dust and soils
Polychlorinated biphenyls (PCBs)
Ozone depleting substances and synthetic greenhouse gases
Other hazardous/unidentified materials including: mould, microbial activity and chemical residues

Full Asbestos Hygiene Capabilities
Asbestos awareness training
Asbestos Material Surveys (compliance and pre-demolition)
Preparation and review of Asbestos Registers, Management Plans (AMPs) and control plans
Controls and background environmental asbestos monitoring
LAAs able to conduct smoke testing for the seal of asbestos enclosures
The performance of asbestos clearances
Onsite ID and asbestos fibre counting using satellite NATA labs
Expediting confirmation of asbestos fibres within a sample matrix by scanning electron microscopy (SEM)
Provision of an emergency/priority illegal dumping and clearance service



CERTIFIED OCCUPATIONAL HYGIENE (COH) SERVICES



Mould and Microbiology
Mould and microbiological investigations
Building materials moisture content
Response to storm and accidental water release claims

THN can assess commercial and domestic premises for the presence of mould. Our comprehensive service goes beyond the identification and remediation of mould, we actually look at the site history to determine the cause and offer recommendation to prevent future occurrences. We offer a range of mould related services that include:

- / Mould assessment and remediation strategies
- / Post remediation verification
- / Air, surface and bulk sampling

Clandestine Drug Laboratories
Assessment and clean up validation of illegal methamphetamine labs/houses
Suspected activity or post police report
Pre/post lease with or without building condition assessment

GENERAL CIVIL AND CONSTRUCTION

General civil, building, and construction works refer to activities related to the design, construction, maintenance and repair of infrastructures, buildings and other structures.

These works are essential for urban development, residential and commercial growth and the functioning of transportation and utility systems. They cover a broad spectrum of tasks that support public and private infrastructure. These areas of work are critical for developing the physical environments where people live, work and travel. They require coordination between architects, engineers, contractors and a wide variety of skilled workers to ensure that projects meet design standards, safety codes and functional requirements. THN has successfully carried out the following major works:

- / Trenching works/pit install/pipe lay/resurface of asphalt (Liberty Grove power upgrade for City Electrical)
- / Multiple new duplex constructions (6 x lots, Tennyson Point for Solash Developments)
- / Bulk Excavation specialising in diamond rock saw cutting (6 x lots, Tennyson Point for Solash Developments)
- / Current building maintenance contract for aged care facilities ST Basils NSW/ACT (Lakemba/Kogarah/Randwick/Miranda)
- / Current building maintenance contract w/School Infrastructure NSW (SINSW)



OUR MANAGEMENT TEAM

KEY CONTACT INFORMATION



GEORGE ARONIS

Managing Director
0410 565 534
george@thngroup.com.au



ANDREW MAVRIKIS

Operations Manager
0422 515 270
andrew@thngroup.com.au

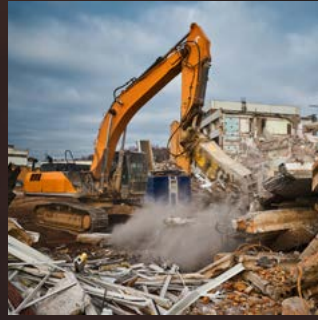


BRENDEN TEHRANI

General Manager
0482 670 058
brenden.t@thngroup.com.au

OUR CLIENTS





www.thngroup.com.au

info@thngroup.com.au

1300 415 462



ABN 54 159 548 160 | NSW Builder 390607C | NSW Class A AD214443
NSW Demo AD214449 | QBCC Builder 15336373



THN/WHERE EXPERTISE MEETS EXCELLENCE